



BPMS™ SYSTEM

seating & positioning analysis

BPMS™ (Body Pressure Measurement System) is the most powerful and versatile pressure measurement and positioning tool of its kind. It provides accurate and reliable pressure readings enabling you to optimize seating, bedding, cushioning and positioning solutions. By pinpointing anatomical structures that cause concentrated pressures, *BPMS* shows you where the pressure needs to be relieved.

BPMS ensures precise measurement of location and magnitude of peak pressures without altering the support surface characteristics. Not only does it provide the capability to identify pressure related problems more effectively, documentation and communication will be easier with the quantitative results it measures, displays, and records.

With multiple configurations available, *BPMS* offers the right solution for any size support surface. The system utilizes a modular sensor concept which allows for a wide range of sensing options for all your application needs. The system of your choice can be built consisting of one or two sensor mats for seating studies, up to a maximum of eight sensors for a full bed.

APPLICATIONS:

- Screen for pressure sores, ulcers, and wounds
- Identify pressure on high risk areas
- Monitor progression and treatment of wound ulcerations
- Pre- and post-surgical evaluations
- Assess seating and posture abnormalities

BENEFITS:

- Reduce the incidence of ulcers & speed healing time
- Enables better selection of support surfaces
- Scientific selection of cushions and positioning
- Provides tangible, visible biofeedback for the client

1 Connect



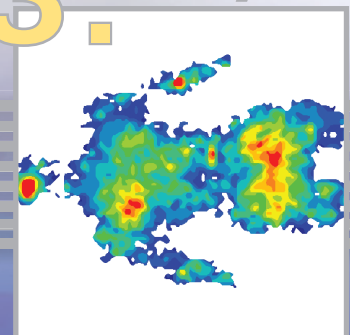
Scan Rates up to 100 Hz

2 Collect



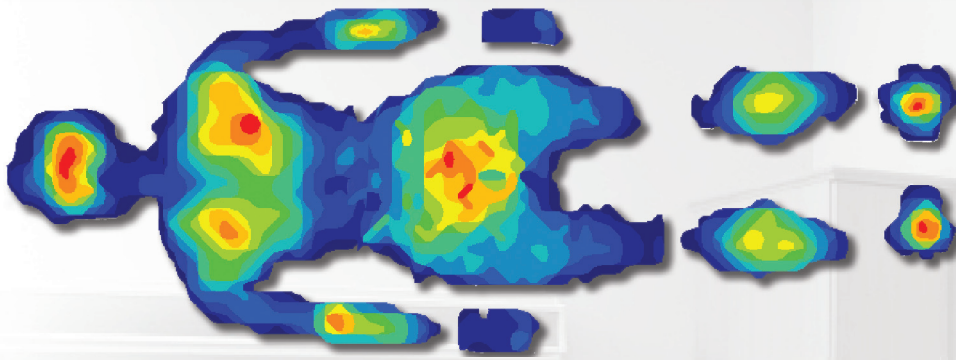
Multiple configurations available to cover a variety of support surfaces

3 Analyze



View 2-D or 3-D data; several graphing options to identify high risk areas

BPMS™ ANALYSIS



Subject shown lying on a 2-sensor configuration (model #5400N). The high spatial resolution of the sensor allows you to measure and display the high pressure areas (in red) as the subject is lying down (back of head, left scapula, right elbow, lower back, and back of heels).

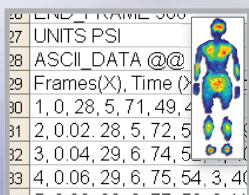
Sensor Model	# of Mats	Sensing Area	# of Sensing Elements	Spatial Resolution
5315	up to 8	up to 1,950.8 mm x 853.4 mm (76.8 in. x 33.6 in.)	up to 16,128	1 sensel/cm ² (6.25 sensels/in ²)
5330	up to 2	up to 942.8 mm x 471.4 mm (37.2 in. x 18.6 in.)	up to 2,048	.5 sensel/cm ² (3.0 sensels/in ²)
5350	up to 2	up to 416.6 mm x 772.2 mm (16.40 in. x 30.40 in.)	up to 3,116	1 sensel/cm ² (6.25 sensels/in ²)
5400N	up to 4	up to 2,312 mm x 884 mm (90.8 in. x 34.8 in.)	up to 7,072	0.35 sensel/cm ² (2.23 sensels/in ²)

Contact us today for a demonstration!

www.tekscan.com / 800.248.3669

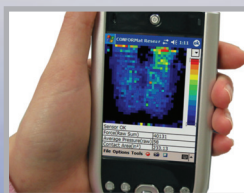
RELATED PRODUCTS & OPTIONS

Research Software



additional graphing capability, tools to isolate and segment anatomical regions, and ASCII output

Handheld/Wireless



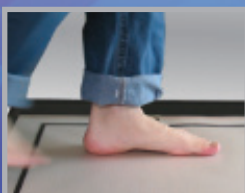
portable system using a PDA to retrieve data without a connection to the computer

Video Synchronization™



synchronize and play back both video and pressure data simultaneously

Floormat



add floor mat(s) for barefoot assessment

F-Socket™



assessment of prosthetic pressures